



**2022**  
**CATALOG**  
**SECURED ENTRANCES WORLDWIDE**  
[www.amajautodoor.com](http://www.amajautodoor.com)

**Central Office:**  
**Unit 8, No 174, Jalal Al Ahmad Blu, Ashrafi**  
**Esfahani St, Tehran, Iran.**  
**Phone: +98 21 44 27 3600**  
**Whatsup : +98 910 929 17 90**



## TRE 150

### TRIPOD TURNSTILE

#### Operation

Adjustable manual passage to either direction.

#### Frame

Two-legged, AISI 304 quality stainless steel. Optional: AISI 316 quality.

#### Core and Arms

CNC-machined, aluminum cast core and polished. Ø 40x2.5 mm aluminum arms  
Optional: Stainless steel arms.

#### Functions

Passage information (NC: Normally close or NO: Normally open).  
Passage time. Memory mode. Audio warning. Adjustable passage direction.

#### Mechanism

AISI 304 quality stainless steel. Fail-Safe (arms rotate freely during power failure)  
Optional: Fail Lock.

#### Emergency Mode

The arms rotate freely with the signal received from fire detection system.  
Optional: Drop arm.

#### Indicator

Direction LEDs for both directions. Optional: Upper lid.

#### Operating Voltage

100-230 VAC. 47-60 Hz

#### Power Consumption

3.8W during passage, 4.1W during standby

#### Operating Temperature

-10° / +70° Optional: With heater -40°

#### Passage Speed

~25 persons / minute.

#### Passage Width

45-50 cm

#### Weight

~30 kg

#### Security Level

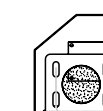
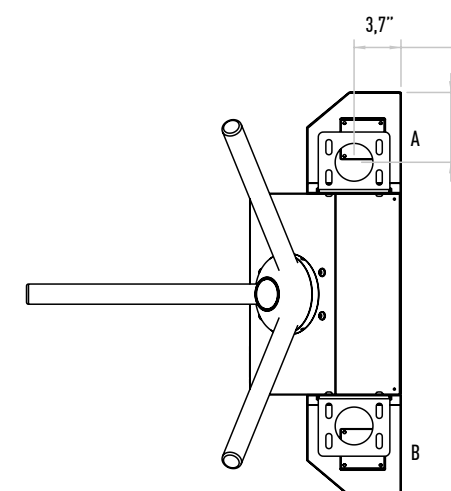
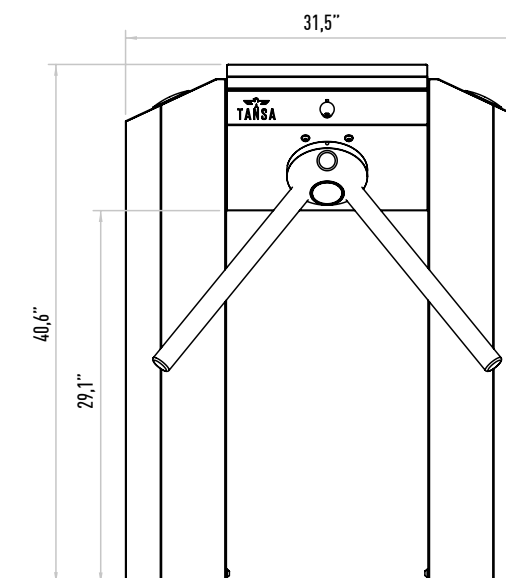
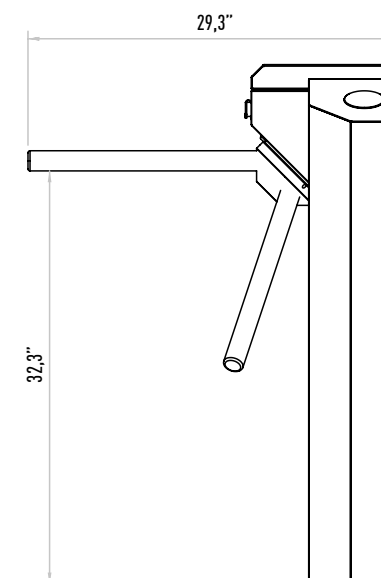
Deterrent.

#### Areas of Use

Suitable for indoor and outdoor use.

#### Accessories

Outdoor cover. Unauthorized passage notification system. Button control unit.  
Remote control unit. Stainless steel bottom plate. Plexiglass reader assembly kit.  
Reader assembly apparatus. Meter. RS232 communication unit.



Detail A  
Ground Mounting Point



Detail B  
Cable Line Out Point

