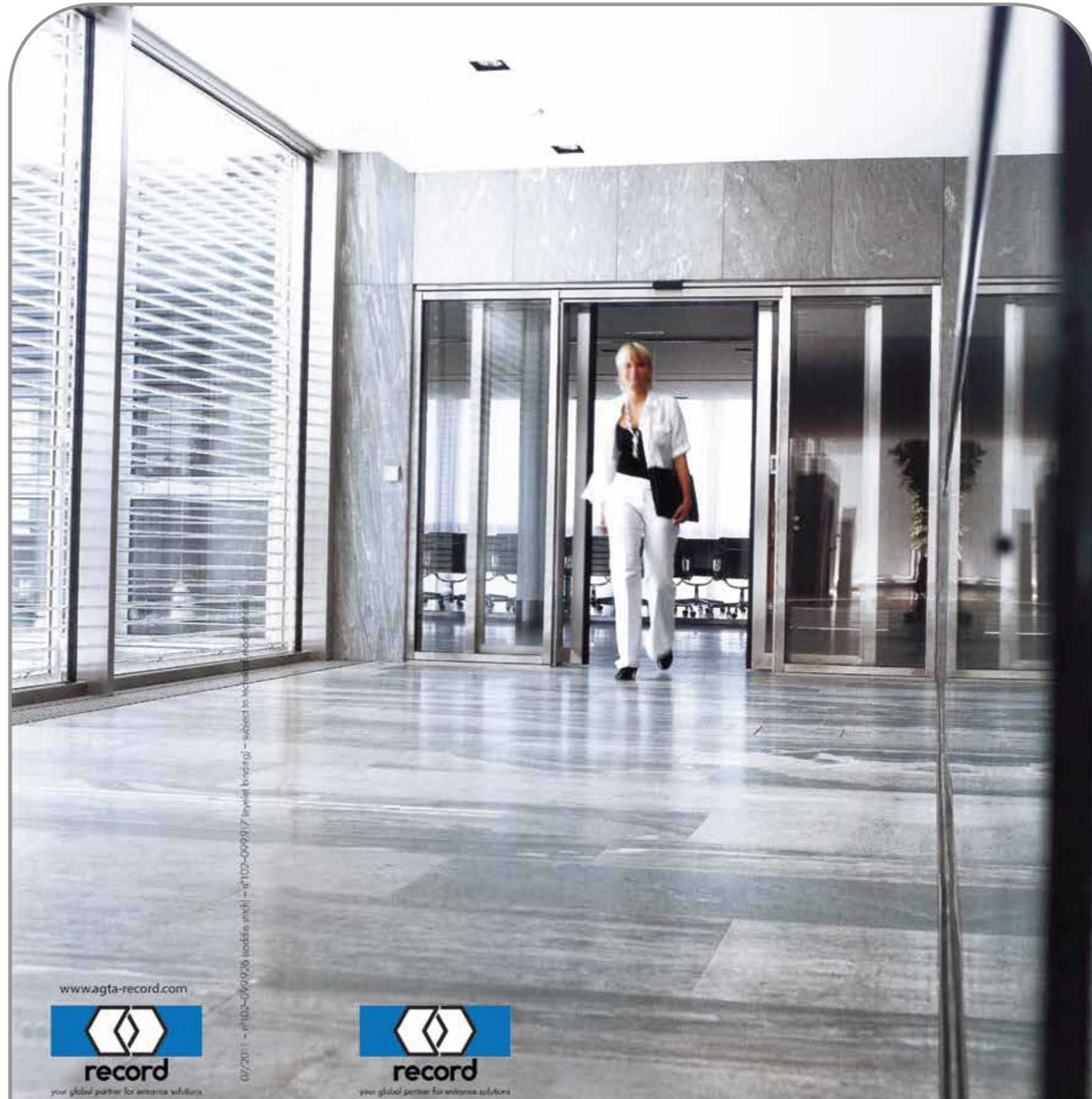


record system 20

The trend-setting automatic door system

Specifications

	Standard sliding door		Telescopic sliding door	
	E-STA (single leaf)	D-STA (twin leaves)	E-TSA (twin leaves)	D-TSA (four leaves)
Drive dimensions				
d x h with side screen (mm)	194 x 108 / 150 or 197 x 200		259 x 108 / 150 or 262 x 200	
d x h without side screen (mm)	157 x 108 / 150 or 160 x 200		222 x 108 / 150 or 225 x 200	
Door movement	1.5s to 0.7m	1.0s to 0.7m	1.5s to 0.7m	1.0s to 0.7m
Electrical connection data	230V / 50 / 60Hz / 100W			
Ambient temperature	-15°C to +50°C			
Remote control unit	Graphic display with background lighting			
Modes of operation	<ul style="list-style-type: none"> ⚡ Automatic operation ⚡ Continuously open ⚡ Manual operation ⚡ One-way traffic ⚡ Locked 			
Optional functions	<ul style="list-style-type: none"> ⚡ Energy saving functions (automatic opening width TOWA) ⚡ Defining customer-specific door parameters ⚡ Control lock ⚡ Bell contact ⚡ Emergency opening or closing (programmable parameters) 			
Options	<ul style="list-style-type: none"> ⚡ Remote control unit BDE-D, compact model ⚡ Key operated contact (SSK) ⚡ record trigger devices: RAD 290, RIC 290, AIR 290 with record system bus connection ⚡ record ADM (central control and monitoring – from about middle of 2012) ⚡ optical lock indicator (OVA) ⚡ Manual unlocking on outside or inside of door ⚡ Locking device surveillance ⚡ Emergency stop switch ⚡ Rechargeable battery for emergency operation in power failures ⚡ Approved escape door systems ⚡ Hinged, foldable drive unit cover or in several parts ⚡ Module to extend functionality for optional upgrades (FEM) 			
Assembly variants	Lintel installation, free-standing or inside ceiling			



system 20

amaj sanat azar

Email: info@amajautodoor.com

Head Office: Unit 8, No 174, Jalal Al Ahmad Blu, Ashrafi Esfahani St, Tehran/Iran
Tel: +98 21 4813 Tel: +98 21 44273600 Fax: +9821 44269959

Factory: No.14D, Golara Street, Golestan Boulevard, Parand Industrial Estate
Tel: +98 21 56417616 Fax: +9821 56417215

www.agta-record.com



record

your global partner for entrance solutions



record

your global partner for entrance solutions

07/2011 - 0110-099926 (middle sheet) - 0107-099917 (sheet to strip) - subject to technical modifications

Options and Equipment



record system 20

- Standard sliding door, single or twin leaves
- Telescopic sliding door, two or four leaves
- Round or curved sliding door
- Angled sliding door
- Folding door
- Specific sliding door solutions

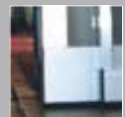


Escape door systems

- Redundant (RED)
- Electrical power storage device BAT (UK/DK)
- Mechanical power storage device CO48 (F)
- Total opening system (TOS)

Installation Variants

- On lintel, freestanding or recessed in ceiling



Maximum Door Leaf Weight

- Standard sliding doors [DUO/RED]: E-STA 1 x 150 kg [1 x 150 kg], D-STA 2 x 120kg [2 x 150 kg]
- Telescopic sliding doors [DUO/RED]: E-TSA 2 x 90kg [2 x 120 kg], D-TSA 4 x 80 kg [4 x 90 kg]
- Reinforced models STA 20-200 [STA 22]: E-STA 1 x 200kg [1 x 250 kg], D-STA 2 x 150kg, [2 x 200 kg], E-TSA 2 x 130kg [2 x 170 kg], D-TSA 4 x 90 kg [4 x 130 kg]

Special Options

- Optical locking display (OVA)
- Use-dependent opening width (TOWA)
- Bell contact
- Monitoring of locking
- Other options available in line with customer's wishes



Protective screens

- Elegant protection against trapping



Rechargeable batteries for emergency operation

- Available in a range of capacities



Locking

- Motorized bolt-operated locking (VRR 20)
- Magnetic locking (VRR 16)
- Multipoint locking (MPV)
- Magnetic catch



Drive Covers

- Drive unit height 108 mm and 150 mm
- 200 mm drive unit height for reinforced models STA 20-200 and STA 22
- Hinged, foldable drive unit cover and/or in several parts



Trigger Devices, Safety and Security Sensors

- RAD 290 (Radar motion sensor)
- AIR 290 (Active infrared motion sensor/monitoring of persons)
- RIC 290 (combined sensor)
- Proximity switch (Infrared)



Buttons and Switches

- Wireless trigger device EASY open,
- Remote Control Device for RADAR
- Passive infrared sensors (PIR)



Key-operated contact (SSK)

- Built-on or remote controlled

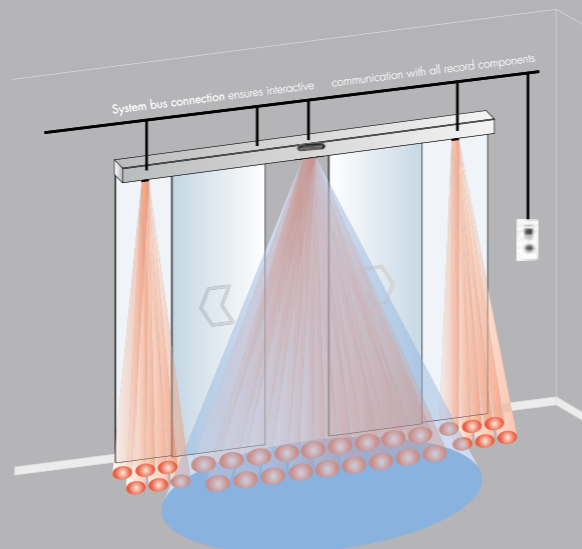
Manual Unlocking

- HEI (indoors)
- HEA (outdoors)



Remote Control Devices

- BDE-D (display with background lighting)
- Available in narrow fitting or square for standard built-in frames
- Equipped with key-operated lock if required



record system 20 – Qualities

The record system 20 enables the construction of a vast range of door models. Designed using modular construction principles, it can be adapted to suit the widest range of conditions and yet is largely based on the same components. This shortens installation time and reduces service and maintenance costs.

Mechanics

The absence of noise is the most striking feature of record automatic doors. Our combination of short, low-momentum toothed belts, rollers made from hard-wearing, low-noise plastic, acoustically decoupled running tracks, guide pulley wheels with ball bearings and door leaf guides with specially developed guide profiles all contribute to an exceptionally quiet running door.

Electronics

The record system 20 components can communicate with one another interactively, which, among other things, enhances safety and security. The ability of drive, sensors and remote to communicate enables continuous monitoring of component status. The operational status of the door system and its individual electronic components also continuously undergo plausibility checks. Thanks to its learning capacity, the potential of the unit to malfunction is reduced to a minimum.

Doors can be operated using a remote control featuring a graphic display with background lighting, and easy-to-use, menu-led navigation with text in the language of your choice; if required, an additional key operated switch is available.

Design

For the record system 20, there are 20 mm thick aluminium profiles available for 10mm thick single glazed leaves, or 32mm thick profiles suitable for 24 mm thick insulating glass to allow the greatest possible transparency. Even profiles of other manufacturers up to 65 mm can be fitted. Both profiles and drive unit cover can be anodized or powder-coated.

Drive unit heights for both the normal, DUO and RED versions are available in either 108 mm or 150 mm; 200 mm for the STA 20-200 and STA 22 reinforced models. The drive unit can be fitted to the lintel, freestanding or integrated in the ceiling.



	Linear standard-sliding door		Linear telescopic sliding door	
Door type	E-STA (one leaf)	D-STA (two leaves)	E-TSA (two leaves)	D-TSA (four leaves)
Opening width	800 – 3000mm	800 – 3000mm	800 – 3000mm	1440 – 4000mm
Clear height of passage	3000mm	3000mm	3000mm	3000mm
Max. door leaf weight	1 x 150kg	2 x 120kg	2 x 90	4 x 80kg
DUO / RED model	1 x 150kg	2 x 150kg	2 x 120kg	4 x 90kg
Recommended application	single leaf door automation for tight spaces	for most normal applications	for maximum width of passage in tight spaces	for elegant entrances and generous width of passage

*recommended maximum value

